



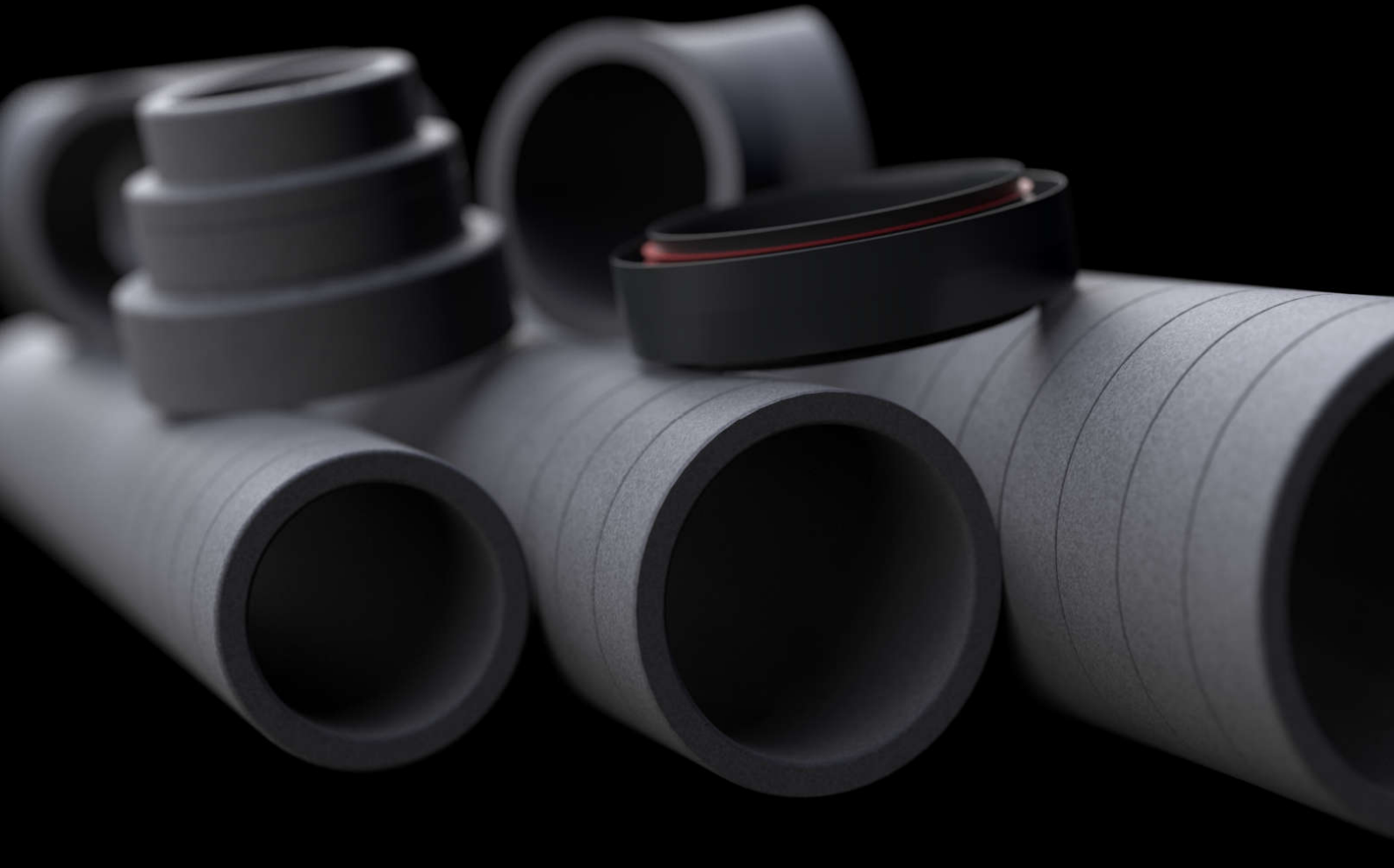
[www.logato.se](http://www.logato.se)

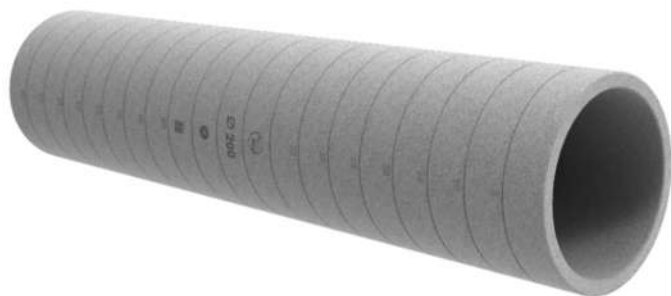
# ARIA ADURO



Insulated Mass Flow Ducts  
125/160/200 mm

Technical Data



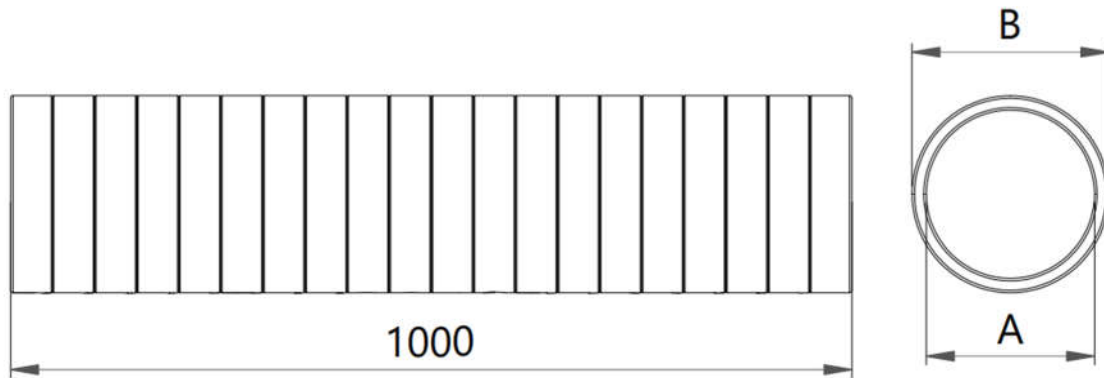


Insulated mass flow 1 m long duct are used for transferring large quantities of air between HRV unit and intake/outlet as well as HRV unit and distribution boxes. Pipes are made out of light and durable material with high insulating properties – expanded polystyrene (EPS) with added graphite, resistant to fungi, mold and bacteria. The pipes are made from one piece.

TECHNICAL DATA			
Material	Expanded polystyrene (EPS)		
Service temperature	STL -15°C to STH +50°C		
Reaction to fire	Class E, acc. to PN-EN 13501-1:2019-02		
Thermal conductivity	0.029 W/(m•K)		
Thermal resistance	<b>125 mm</b>	<b>160 mm</b>	<b>200 mm</b>
	1.32 m <sup>2</sup> K/W	1.06 m <sup>2</sup> K/W	0.86 m <sup>2</sup> K/W
Resistance to external pressure	<b>125 mm</b>	<b>160 mm</b>	<b>200 mm</b>
	170 N	110 N	69 N
Air tightness	ATC1		
Mechanical connection	MC3		

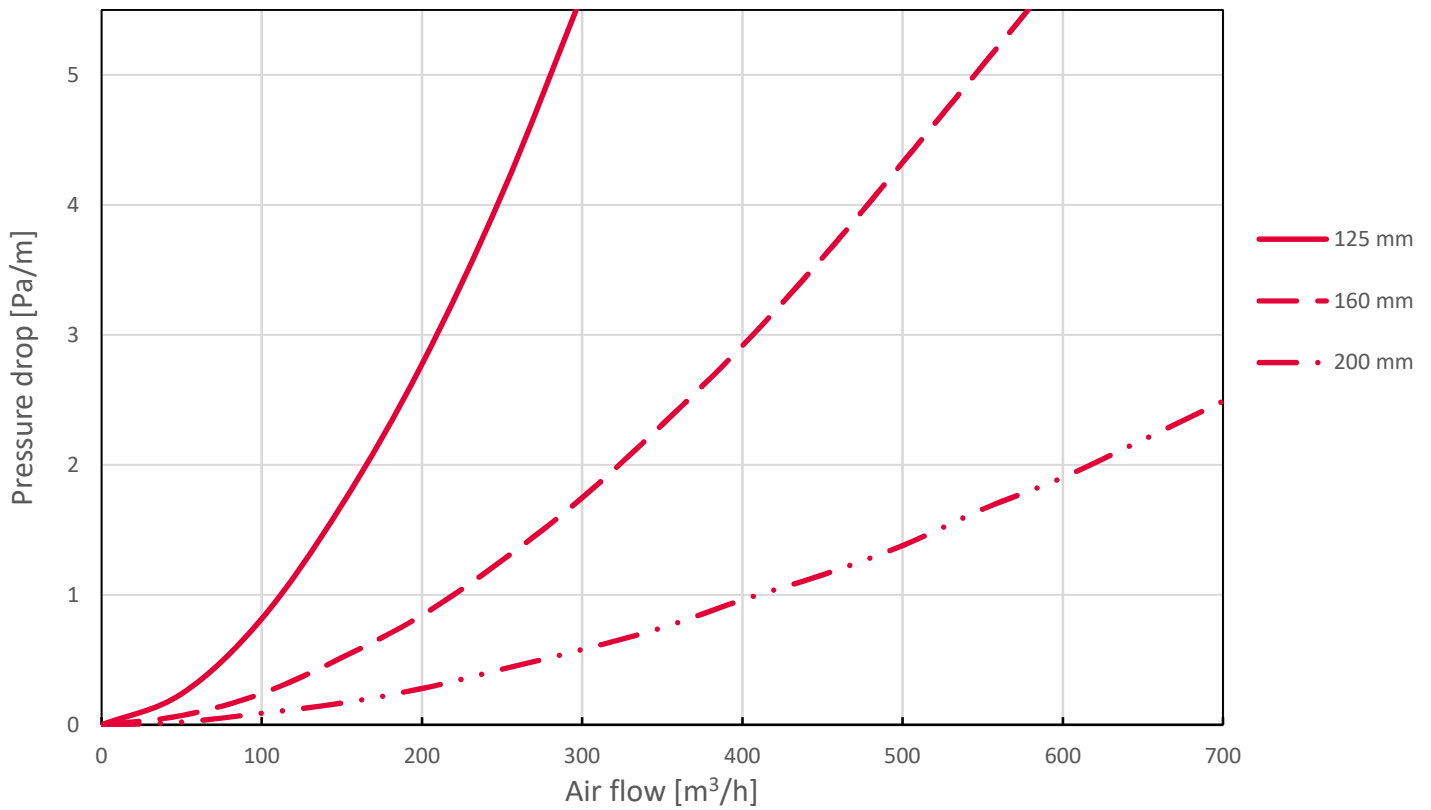
## ARIA ADURO 125/160/200 mm PIPE

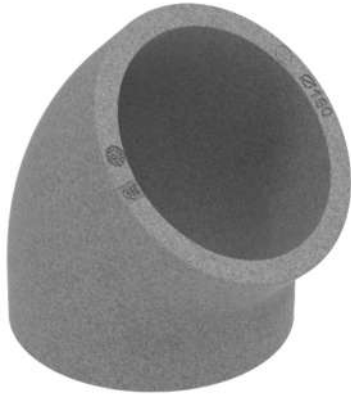




NAME	DIMENSIONS			MASS [kg]	CATALOGUE NUMBER
	Internal Diameter A [mm]	Outer diameter B [mm]	Length [mm]		
ARIA ADURO PIPE 125 mm	125	159	1000	0.26	52912500100T
ARIA ADURO PIPE 160 mm	160	194	1000	0.33	52916000100T
ARIA ADURO PIPE 200 mm	200	234	1000	0.40	52916000100T

### Pressure drop - Aria Aduro Pipe



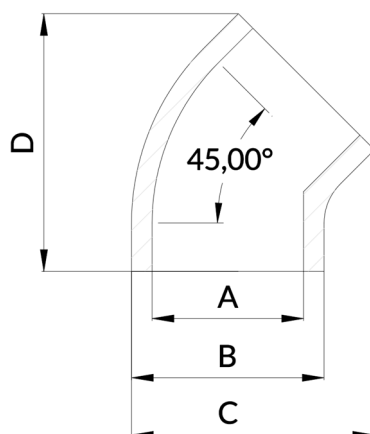


Bend 45° for the insulated mass flow ductwork Heatpex ARIA ADURO.

TECHNICAL DATA			
Material	Expanded polystyrene (EPS)		
Service temperature	STL -15°C to STH +50°C		
Reaction to fire	Class E, acc. to PN-EN 13501-1:2019-02		
Thermal conductivity	0.029 W/(m•K)		
Thermal resistance	<b>125 mm</b>	<b>160 mm</b>	<b>200 mm</b>
	1.32 m <sup>2</sup> K/W	1.06 m <sup>2</sup> K/W	0.86 m <sup>2</sup> K/W
Resistance to external pressure	<b>125 mm</b>	<b>160 mm</b>	<b>200 mm</b>
	170 N	110 N	69 N
Air tightness	ATC1		
Mechanical connection	MC3		

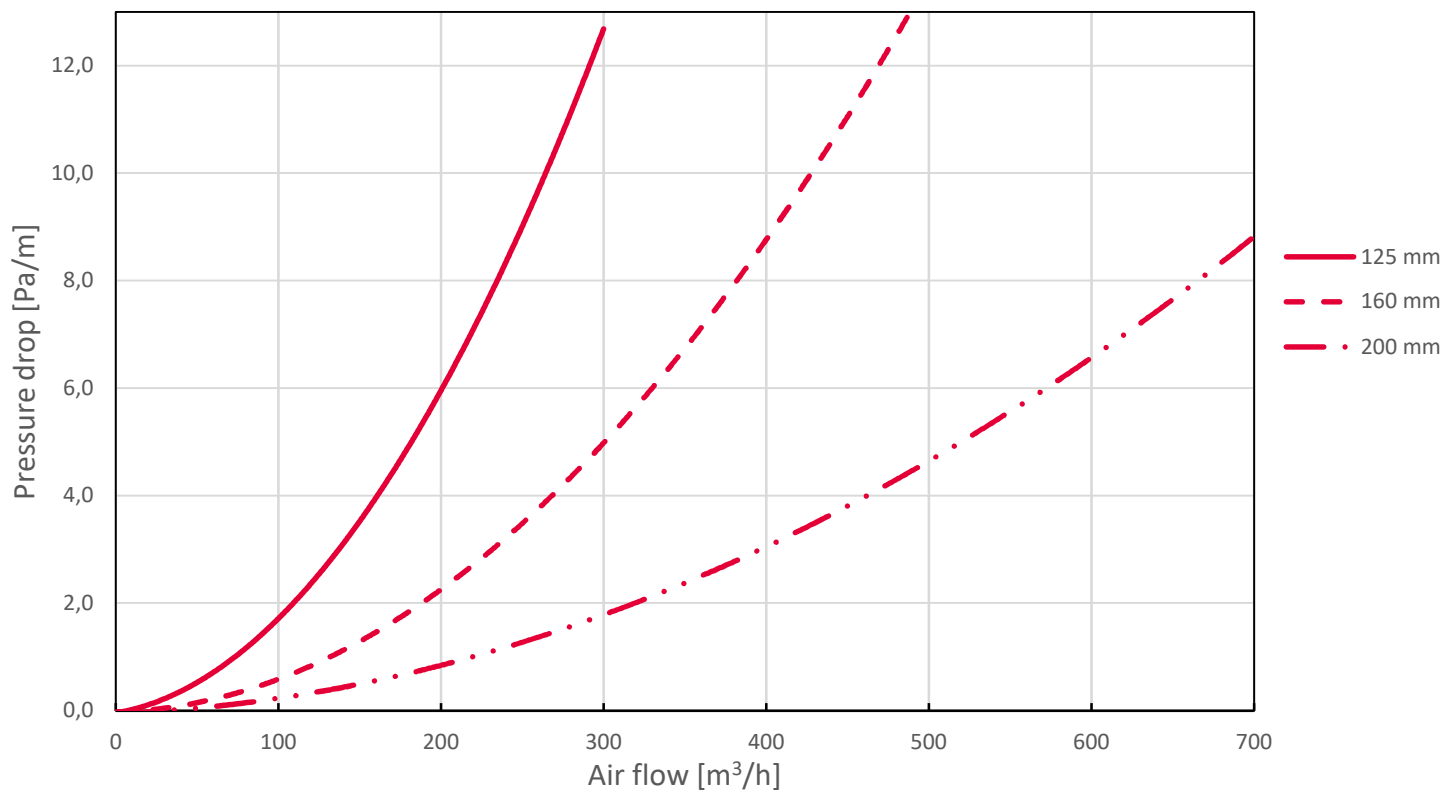
## ARIA ADURO 125/160/200 mm 45° bend





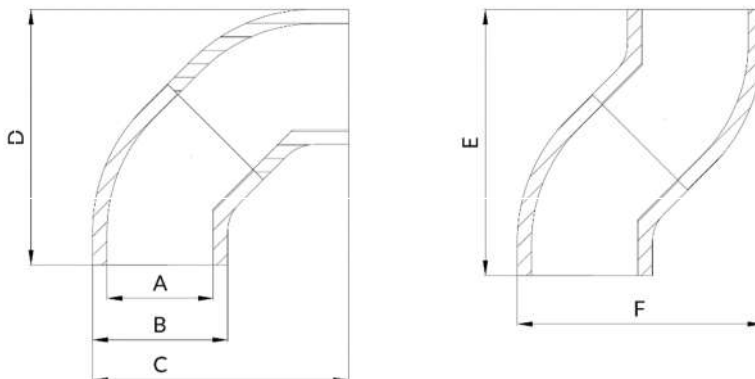
NAME	DIMENSIONS				MASS [kg]	CATALOGUE NUMBER
	Internal Diameter A [mm]	Outer diameter B [mm]	Length C [mm]	Height D [mm]		
ARIA ADURO Bend 45° 125 mm	125	159	201	213	0.05	52912590100T
ARIA ADURO Bend 45° 160 mm	160	194	231	226	0.06	52916090100T
ARIA ADURO Bend 45° 200 mm	200	234	265	235	0.09	52920090100T

### Pressure drop - Aria Aduro 45° Bend



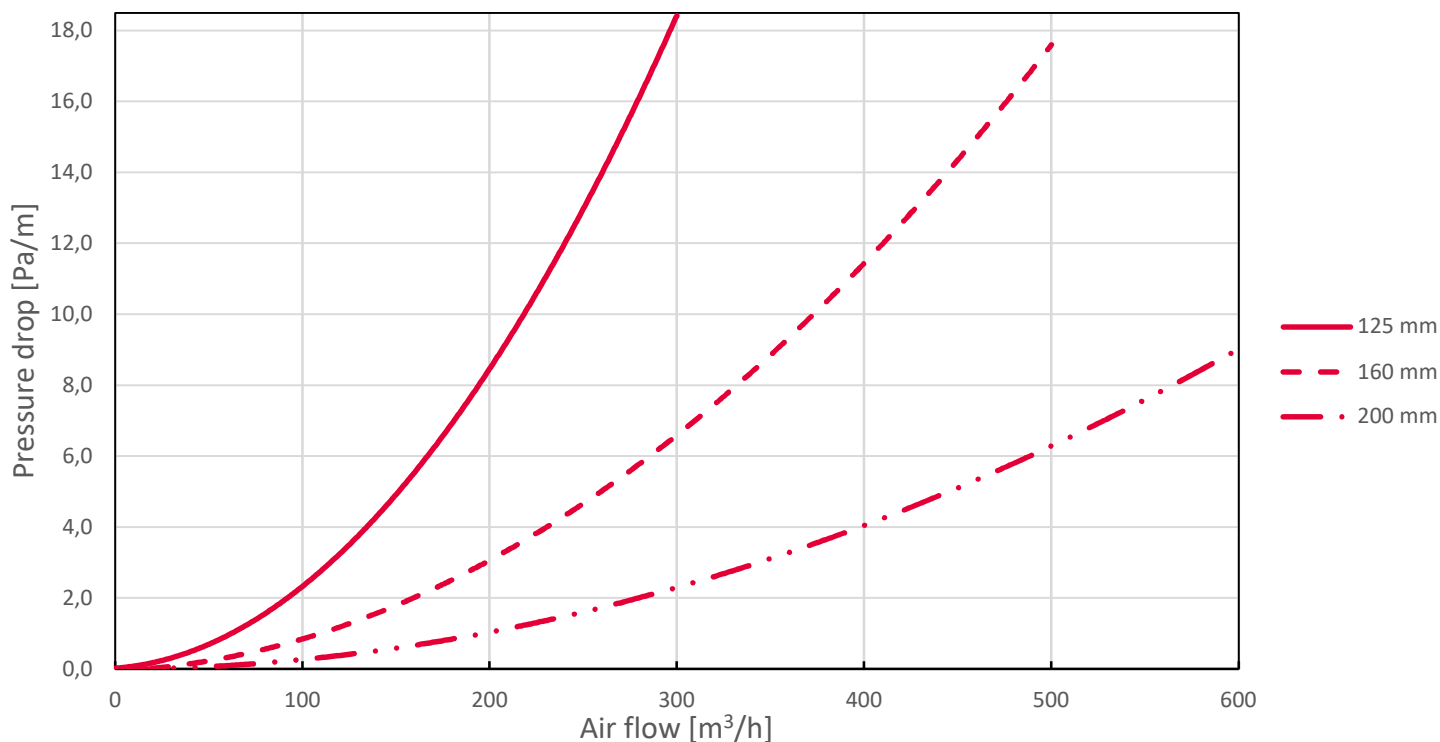


90° bend (2 connected 45° bends) for the insulated mass flow ductwork Heatpex ARIA ADURO



NAME	DIMENSIONS						MASS [kg]	CATALOGUE NUMBER
	Internal Diameter A [mm]	Outer diameter B [mm]	Length C [mm]	Height D [mm]	Height E [mm]	Length F [mm]		
ARIA ADURO Bend 45° 125 mm	125	159	301	301	313	289	0.05	52912590100T
ARIA ADURO Bend 45° 160 mm	160	194	319	319	313	324	0.06	52916090100T
ARIA ADURO Bend 45° 200 mm	200	234	339	339	313	364	0.09	52920090100T

## Pressure drop - Aria Aduro 90° Bend

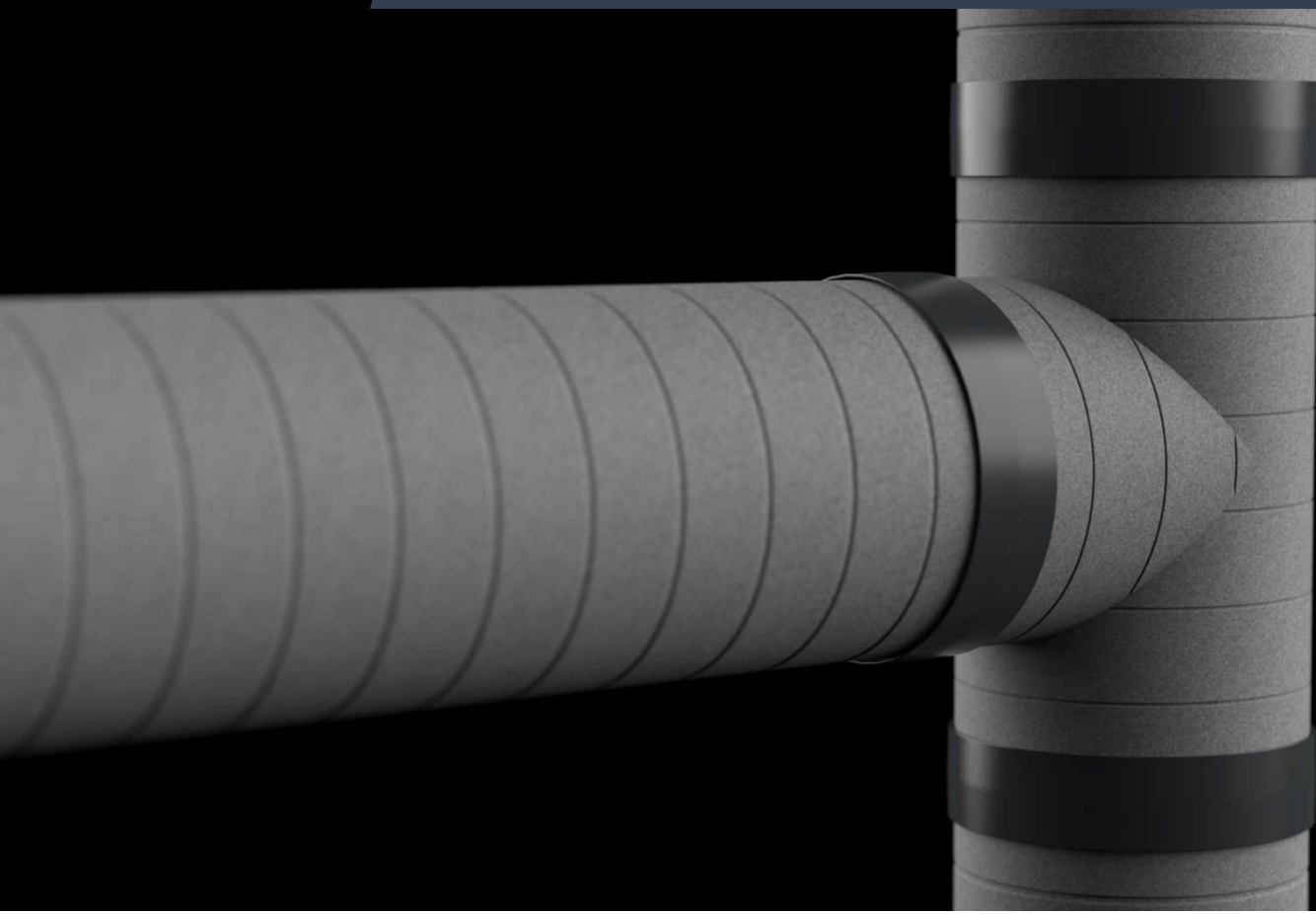


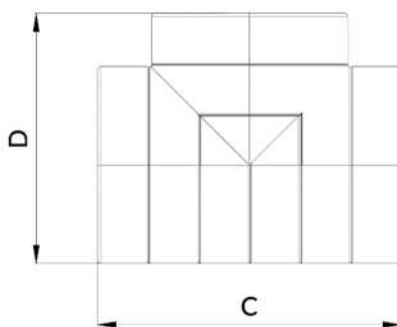
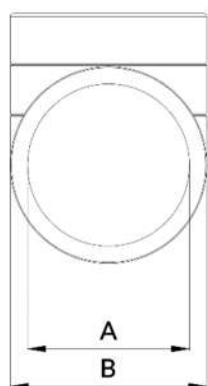


Equal Tee for the insulated mass flow ductwork Heatpex ARIA ADURO.

TECHNICAL DATA			
Material	Expanded polystyrene (EPS)		
Service temperature	STL -15°C to STH +50°C		
Reaction to fire	Class E, acc. to PN-EN 13501-1:2019-02		
Thermal conductivity	0.029 W/(m•K)		
Thermal resistance	<b>125 mm</b>	<b>160 mm</b>	<b>200 mm</b>
	1.32 m <sup>2</sup> K/W	1.06 m <sup>2</sup> K/W	0.86 m <sup>2</sup> K/W
Resistance to external pressure	<b>125 mm</b>	<b>160 mm</b>	<b>200 mm</b>
	170 N	110 N	69 N
Air tightness	ATC1		
Mechanical connection	MC3		

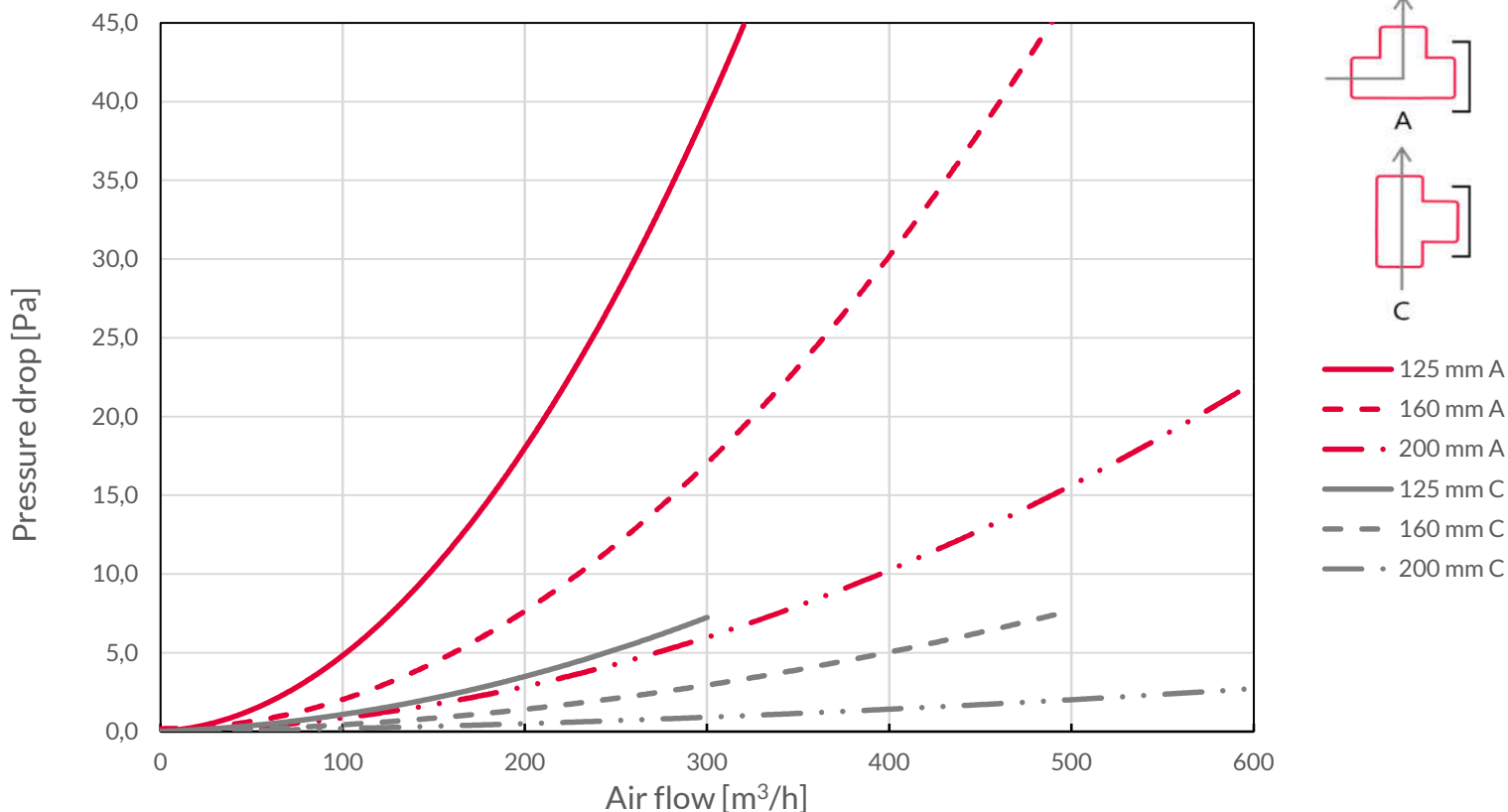
## ARIA ADURO 125/160/200 mm Tee





NAME	DIMENSIONS				MASS [kg]	CATALOGUE NUMBER
	Internal Diameter A [mm]	Outer diameter B [mm]	Length C [mm]	Height D [mm]		
ARIA ADURO Bend 45° 125 mm	125	159	300	229	0.19	52912580100W
ARIA ADURO Bend 45° 160 mm	160	194	300	247	0.28	52916080100T
ARIA ADURO Bend 45° 200 mm	200	234	450	317	0.37	52920080100T

### Pressure drop - Aria Aduro Tee





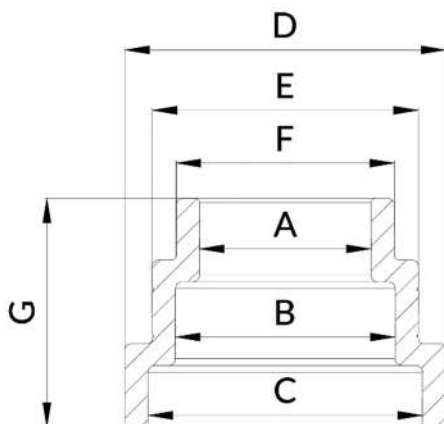


Reduction for Aria Aduro system. It allows to transfer from 200 mm ductwork to 160 mm or 125, or from 160 mm to 125 mm. The unused part need to be cut off at the indentation.

TECHNICAL DATA			
Material	Expanded polystyrene (EPS)		
Service temperature	STL -15°C to STH +50°C		
Reaction to fire	Class E, acc. to PN-EN 13501-1:2019-02		
Thermal conductivity	0.029 W/(m•K)		
Thermal resistance	<b>125 mm</b>	<b>160 mm</b>	<b>200 mm</b>
	1.32 m <sup>2</sup> K/W	1.06 m <sup>2</sup> K/W	0.86 m <sup>2</sup> K/W
Resistance to external pressure	<b>125 mm</b>	<b>160 mm</b>	<b>200 mm</b>
	170 N	110 N	69 N
Air tightness	ATC1		
Mechanical connection	MC3		

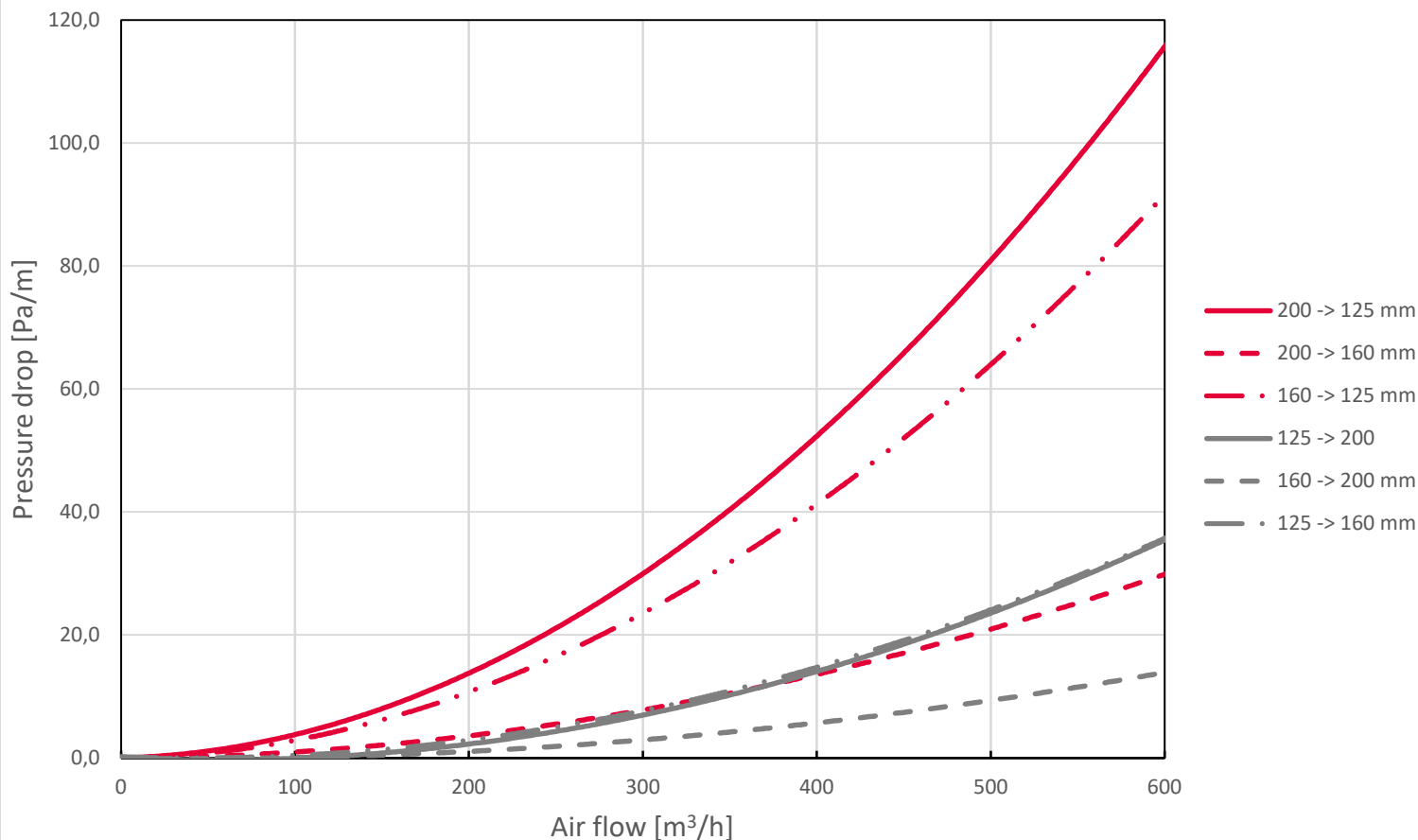
## ARIA ADURO 125/160/200 mm Reduction





NAME	DIMENSIONS							MASS [kg]	CATALOGUE NUMBER
	Internal Diameter A [mm]	Internal diameter B [mm]	Internal diameter C [mm]	Outer diameter D [mm]	Outer diameter E [mm]	Outer diameter F [mm]	Height G [mm]		
ARIA ADURO 125/160/200 mm Reduction	125	160	250	234	194	159	167	0.07	52010200100T

### Pressure drop - Aria Aduro Reduction 125/160/200

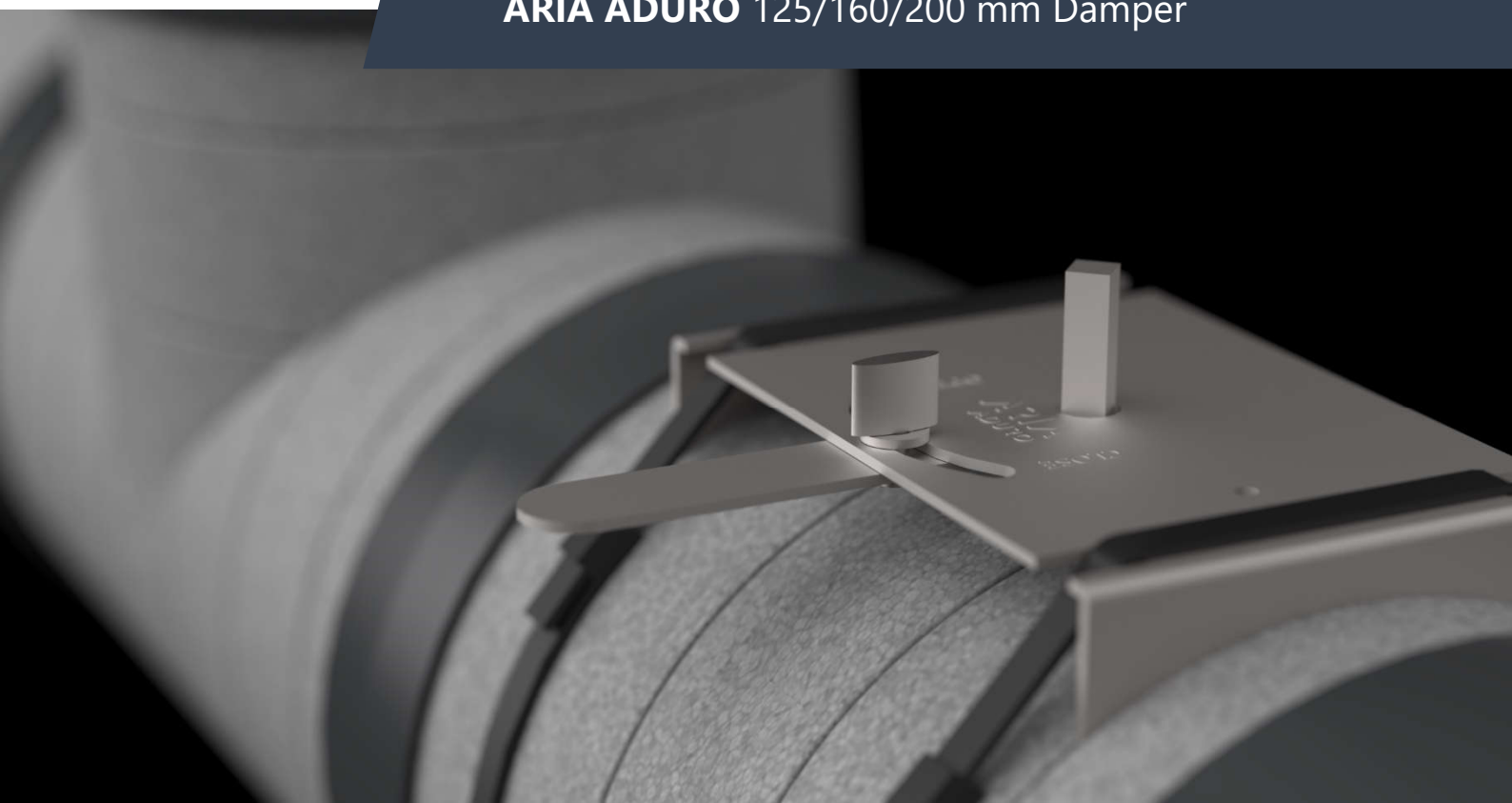


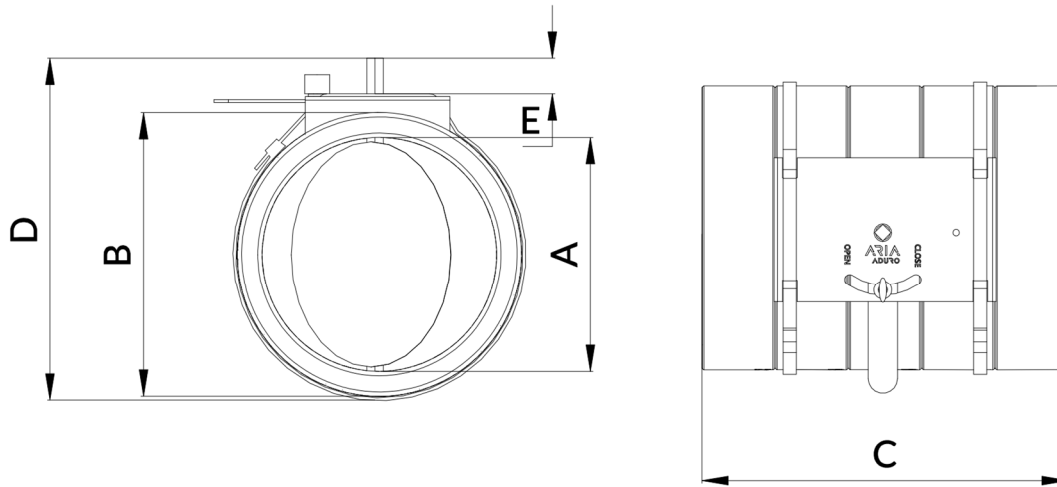


Regulating damper ARIA ADURO is used to control the air flow volume in mechanical ventilation and heat recovery ventilation systems. The damper is made from expanded polystyrene and galvanized steel. It is recommended to connect two dampers with a single tee in order to precisely balance airflows on each of the ventilation system branches. Regulating damper doesn't provide 100% air shut off.

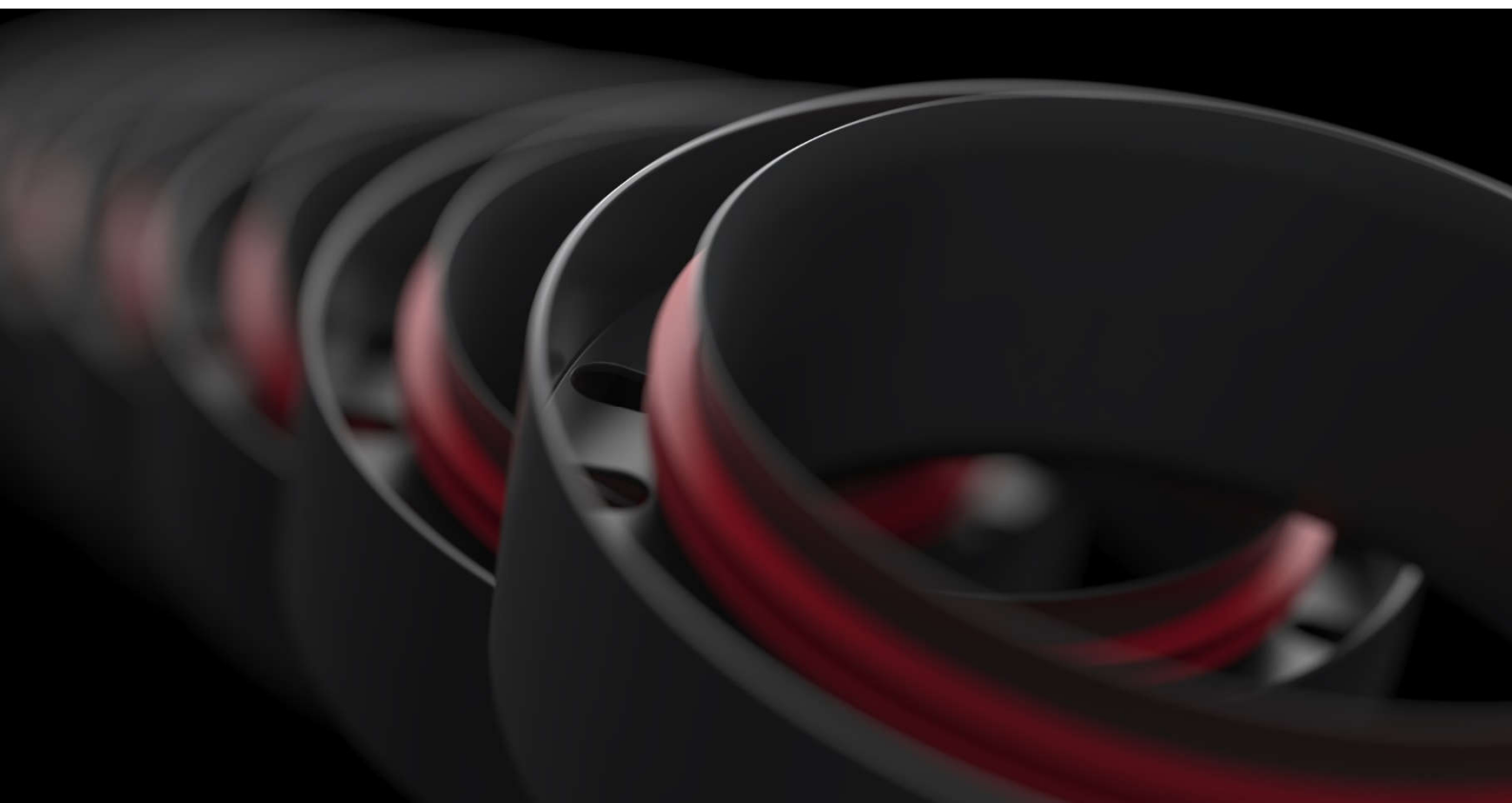
TECHNICAL DATA			
Material	Expanded polystyrene (EPS), galvanized steel		
Service temperature	STL -15°C to STH +50°C		
Reaction to fire	Class E, acc. to PN-EN 13501-1:2019-02		
Thermal conductivity	0.029 W/(m·K)		
Thermal resistance	<b>125 mm</b>	<b>160 mm</b>	<b>200 mm</b>
	1.32 m <sup>2</sup> K/W	1.06 m <sup>2</sup> K/W	0.86 m <sup>2</sup> K/W
Resistance to external pressure	<b>125 mm</b>	<b>160 mm</b>	<b>200 mm</b>
	170 N	110 N	69 N
Air tightness	ATC1		
Mechanical connection	MC3		

## ARIA ADURO 125/160/200 mm Damper





NAME	DIMENSIONS					MASS [kg]	CATALOGUE NUMBER
	Internal Diameter A [mm]	Outer diameter B [mm]	Length C [mm]	Height D [mm]	Stub height E [mm]		
ARIA ADURO 125 mm Damper	125	159	250	197	26	0.72	52912560100W
ARIA ADURO 160 mm Damper	160	194	250	234	26	0.86	52916060100W
ARIA ADURO 200 mm Damper	200	234	250	272	26	1.03	52920060100W

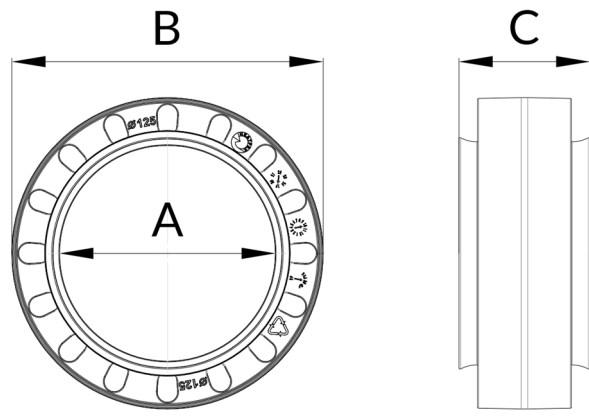




Connector with gaskets on both sides for connecting elements of insulated mass flow duct work Heatpex ARIA ADURO

TECHNICAL DATA	
Material	Polypropylene, EPDM
Service temperature	STL -15°C to STH +50°C
Reaction to fire	Class E, acc. to PN-EN 13501-1:2019-02
Air tightness	ATC1
Mechanical connection	MC3

## HEATPEX ARIA ADURO 125/160/200 mm Connector



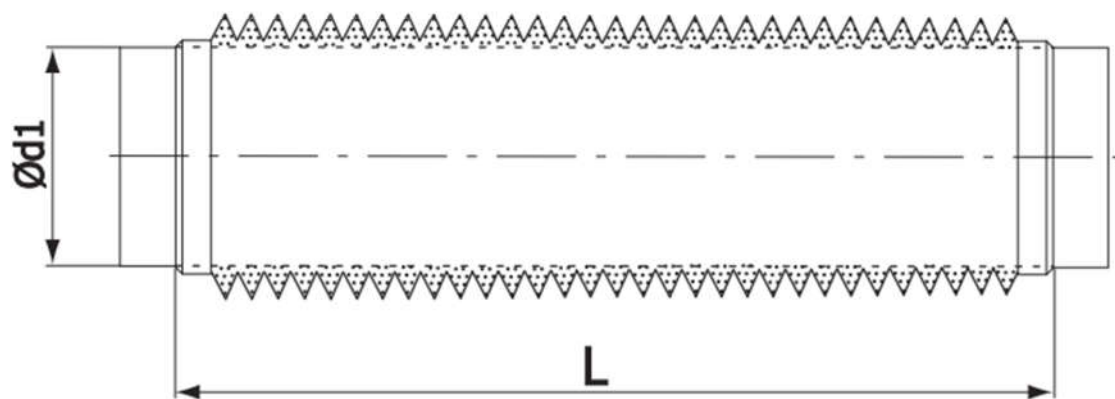
NAME	DIMENSIONS			MASS [kg]	CATALOGUE NUMBER
	Internal Diameter A [mm]	Outer diameter B [mm]	Width C [mm]		
ARIA ADURO 125 mm Connector	125	166	70	0.72	52912560100W
ARIA ADURO 160 mm Connector	160	201	70	0.86	52916060100W
ARIA ADURO 200 mm Connector	200	241	70	1.03	52920060100W



Elastic duct silencer for effective noise reduction, dedicated for installation on the HRV unit air supply and extract connections. Inner surface made out of perforated duct covered with 25 mm thick insulation from glass, covered by aluminium-polyester jacket



- Duct silencer 1 m long available in 3 diameters: Ø125, Ø160 and Ø200
- Male end with gasket on both sides ensuring air tight connection
- Effective noise reduction
- Insulation of mineral wool:  $\lambda=0,029$  W/mK



## DUCT SILENCER ARIA ADURO

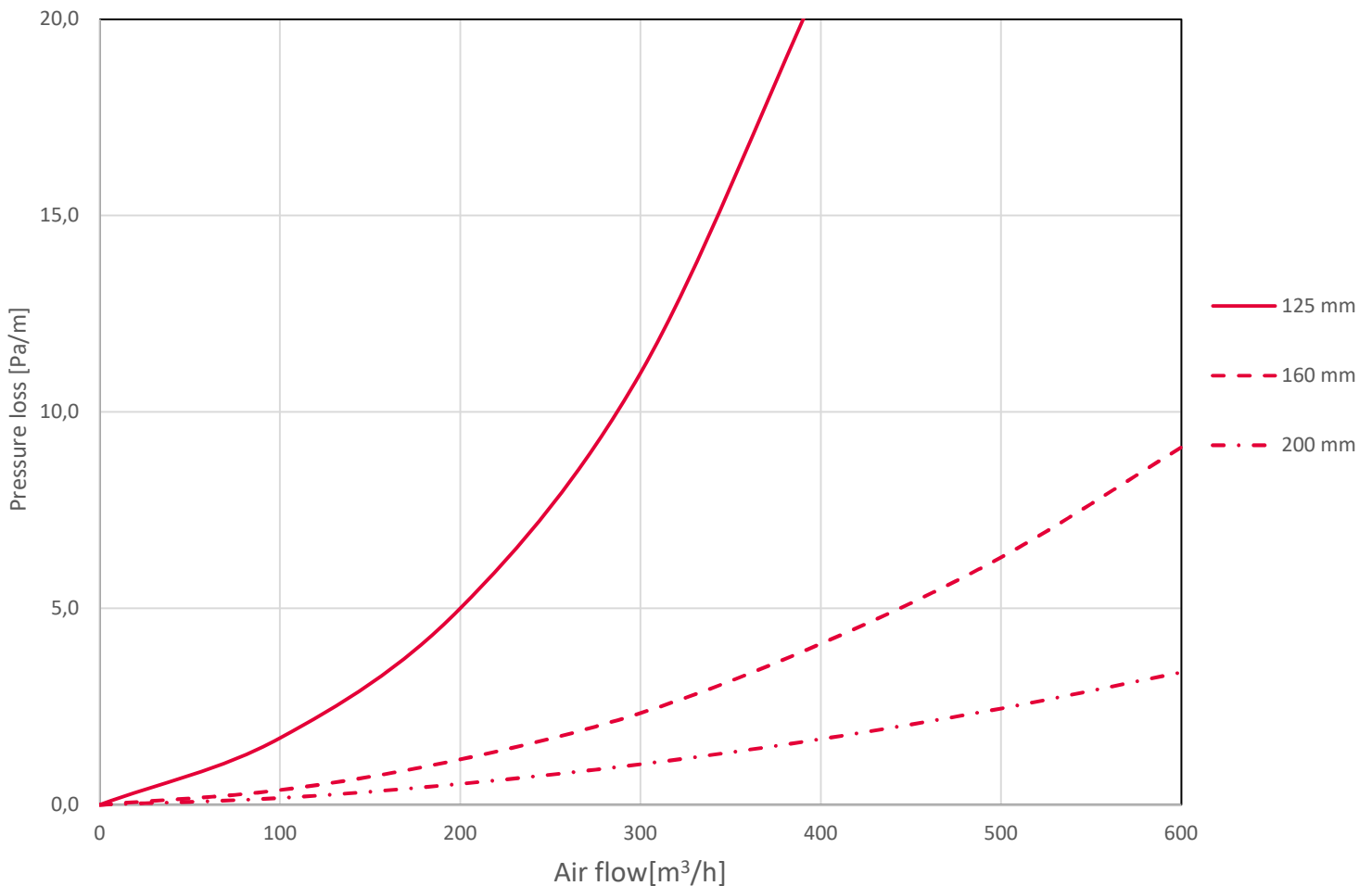




NAME	DIMENSION		MATERIAL	CATALOGUE NO.
	Length L	Nominal diameter Ød1		
ARIA ADURO Duct silencer 125 mm	1000 mm	125 mm	Aluminium-polyester jacket, galvanized steel sheet, EPDM rubber, glass wool	52010300100T
ARIA ADURO Duct silencer 160 mm		160 mm		52010400100T
ARIA ADURO Duct silencer 200 mm		200 mm		52010500100T

NAME	SOUND INSULATION [dB] at frequency [Hz]						
	125	250	500	1000	2000	4000	8000
ARIA ADURO Duct silencer 125 mm	30	36	30	34	32	25	12
ARIA ADURO Duct silencer 160 mm	17	29	28	30	30	23	11
ARIA ADURO Duct silencer 200 mm	24	30	23	26	27	16	10

### Pressure loss - Duct silencer ARIA ADURO

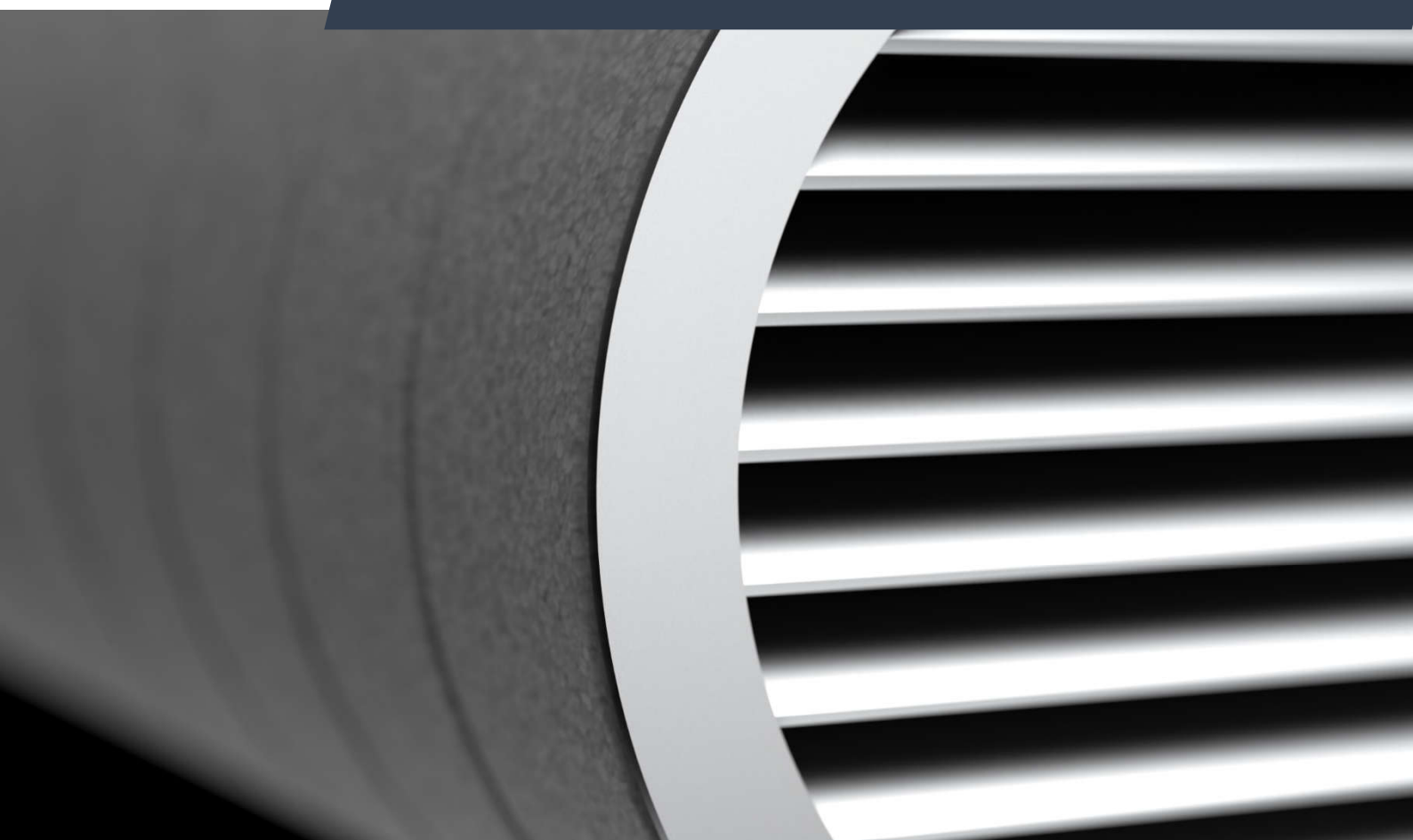




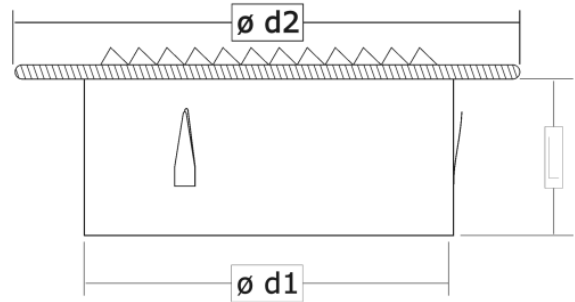
Air intake/outlet made of aluminium. Grille is equipped with a mesh protecting the ducting from insects or dust. Suitable for installation on the outer building wall

- Ⓢ Available in 3 diameters: Ø125, Ø160 and Ø200
- Ⓢ Made out of painted aluminium RAL 9006 mat (grey)
- Ⓢ Fast and easy installation (2 installation holes).

## AIR INTAKE/OUTLET GRILLE – FLAT







DESIGNATION	DIMENSIONS				Weight [kg]	MATERIAL	CATALOGUE NO.
	Nominal diam. [mm]	Outside diam. (d2) [mm]	Collar diam. (d1) [mm]	Collar len. (E) [mm]			
KA 125	125	150	122	45	0.120	Aluminium	520 109 001
KA 160	160	188	157	45	0.175		520 110 001
KA 200	200	225	197	45	0.230		520 111 001





Air intake/outlet grille from stainless steel with hood protecting the ducting from rain or snow. Equipped with a spout, protecting the outer building wall from condensate, and a mesh, protecting the ducting from insects or dust. Suitable for installation on the outer building wall.

- ⌚ Available in 3 diameters: Ø125, Ø160 and Ø200
- ⌚ Made of stainless steel resistant to corrosion - polished surface
- ⌚ Equipped with a spout protecting the outer wall from stains from condensate.
- ⌚ Long collar for fast and easy installation

## AIR INTAKE/OUTLET GRILLE – HOODED

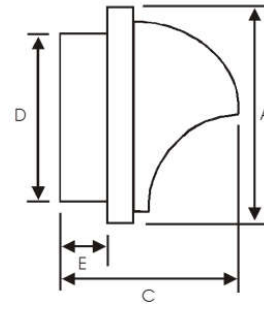
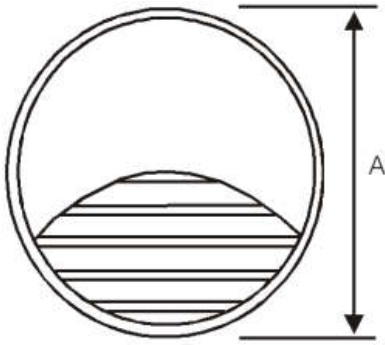




# TECHNICAL DATASHEET

# ARIA ADURO

ONE  
CLICK  
technology



DESIGNATION	DIMENSIONS						MATERIAL	CATALOGUE NO.
	Nominal diam. [mm]	Outside diam. (A) [mm]	Collar diam. (D) [mm]	Collar len. (E) [mm]	Total len. (C) [mm]	Weight [kg]		
AN 125	125	190	120	48	145	0.258	Stainless Steel	520 106 001
AN 160	160	210	155	55	165	0.346		520 107 001
AN 200	200	270	198	60	205	0.930		520 108 001

## Pressure loss - Air Intake/Outlet Grille hooded

